

CITYMULTI® Outdoor Unit: 20-TON PUHY-P240YSKMU-A (-BS) MITSUBISHI ELECTRIC

(Consists of Two PUHY-P120YKMU-A (-BS) and One CMY-Y100CBK3 Twinning Kit)

Job Name:

Schedule Reference:

Date:

OUTDOOR VRF HEAT PUMP SYSTEM FEATURES

- INVERTER-driven compressor
- Air-source, heat pump system
- Long line lengths - for details see Engineering Manual
- Connects to CITY MULTI indoor units
- Controlled via CITY MULTI Controls Network

UNIT OPTION

- Standard Model.....PUHY-P240YSKMU-A
- Sea Coast (BS) Model.....PUHY-P240YSKMU-A-BS

OPTIONAL PARTS

- Twinning Kit (required)..... CMY-Y100CBK3
- Joint Kit.....for details see Pipe Accesories Submittal
- Header Kit.....for details see Pipe Accesories Submittal
- Low Ambient Kitfor details see Low Ambient Kit Submittal
- Snow/Hail Guards Kit.....for details see Snow/Hail Guards Kit Submittal

Specifications		System	Module 1	Module 2
Unit Type		PUHY-P240YSKMU-A (-BS)	PUHY-P120YKMU-A (-BS)	PUHY-P120YKMU-A (-BS)
Nominal Cooling Capacity (460V)	Btu/h	240,000	120,000	120,000
Nominal Heating Capacity (460V)	Btu/h	270,000	135,000	135,000
Operating Temperature Range *1	Cooling (Outdoor) *2	Refer to Module Data	23~115° F (-5~46° C) DB	
	Heating (Outdoor)		-4~60° F (-20~15.5° C) WB	
External Dimensions (H x W x D)	In. / mm	Refer to Module Data	64-31/32 x 68-29/32 x 29-5/32 1,650 x 1,750 x 740	64-31/32 x 68-29/32 x 29-5/32 1,650 x 1,750 x 740
Net Weight	Lbs. / kg	1,452 (658)	726 (329)	726 (329)
External Finish		Refer to Module Data	Pre-coated galvanized steel sheet	
Electrical Power Requirements	Voltage, Phase, Hertz	Refer to Module Data**	460V, 3-Phase, 60Hz	
Minimum Circuit Ampacity (MCA)	A	Refer to Module Data**	20	20
Maximum Fuse Size	A	Refer to Module Data**	25	25
Piping Diameter				
From Twinning Kit to First Joint or Header (Brazed) (In. / mm)	Liquid (High Pressure)	5/8 (15.88) Brazed	Refer to System Data	
	Gas (Low Pressure)	1-1/8 (28.58) Brazed		
Max. Total Refrigerant Line Length	Ft.	3,280	Refer to System Data	
Max. Refrigerant Line Length (Between ODU & IDU)	Ft.	541		
Max. Control Wiring Length	Ft.	1,650		
Indoor Unit	Total Capacity	50~130% of outdoor unit capacity	Refer to System Data	
	Model / Quantity	P06~P96/2~50	Refer to System Data	
Sound Pressure Level	dB(A)	63	Refer to System Data	
Fan				
Type x Quantity		Refer to Module Data	Propeller fan x 2	Propeller fan x 2
Airflow Rate	CFM		11,300	11,300
External Static Pressure	In. WG (Pa)	Refer to Module Data	Selectable; 0, 0.12 or 0.24"WG; factory set to 0"W.G.	
Compressor Operating Range		8% to 100%	Refer to System Data	
Compressor Type x Quantity		Refer to Module Data	Inverter-driven Scroll Hermetic x 1	Inverter-driven Scroll Hermetic x 1
Refrigerant		Refer to Module Data	R410A x 26 lbs + 1 oz (11.8 kg)	R410A x 26 lbs + 1 oz (11.8 kg)
Protection Devices	High Pressure	Refer to Module Data	High pressure sensor, High pressure switch at 4.15 MPa (601 psi)	High pressure sensor, High pressure switch at 4.15 MPa (601 psi)
	Inverter Circuit (Comp. / Fan)		Over-current protection	Over-current protection
	Fan Motor		Thermal switch	Thermal switch
AHRI Ratings (Ducted/Non-Ducted)	EER	12.1 / 12.0	Refer to System Data	
	IEER	18.6 / 18.1		
	COP	3.55 / 3.53		

Blue Fin Anti-corrosion Protection: Cellulose- and polyurethane-resin coating treatment applied to condenser coil that protects it from air contaminants
Standard: ≥1µm thick; Salt Spray Test Method - no unusual rust development to 480 hours.
Sea Coast (BS): ≥1µm thick; Salt Spray Test Method - no unusual rust development to 960 hours.

NOTES:

*1. Harsh weather environments may demand performance enhancing equipment. Ask your Mitsubishi Electric representative for more details about your region.

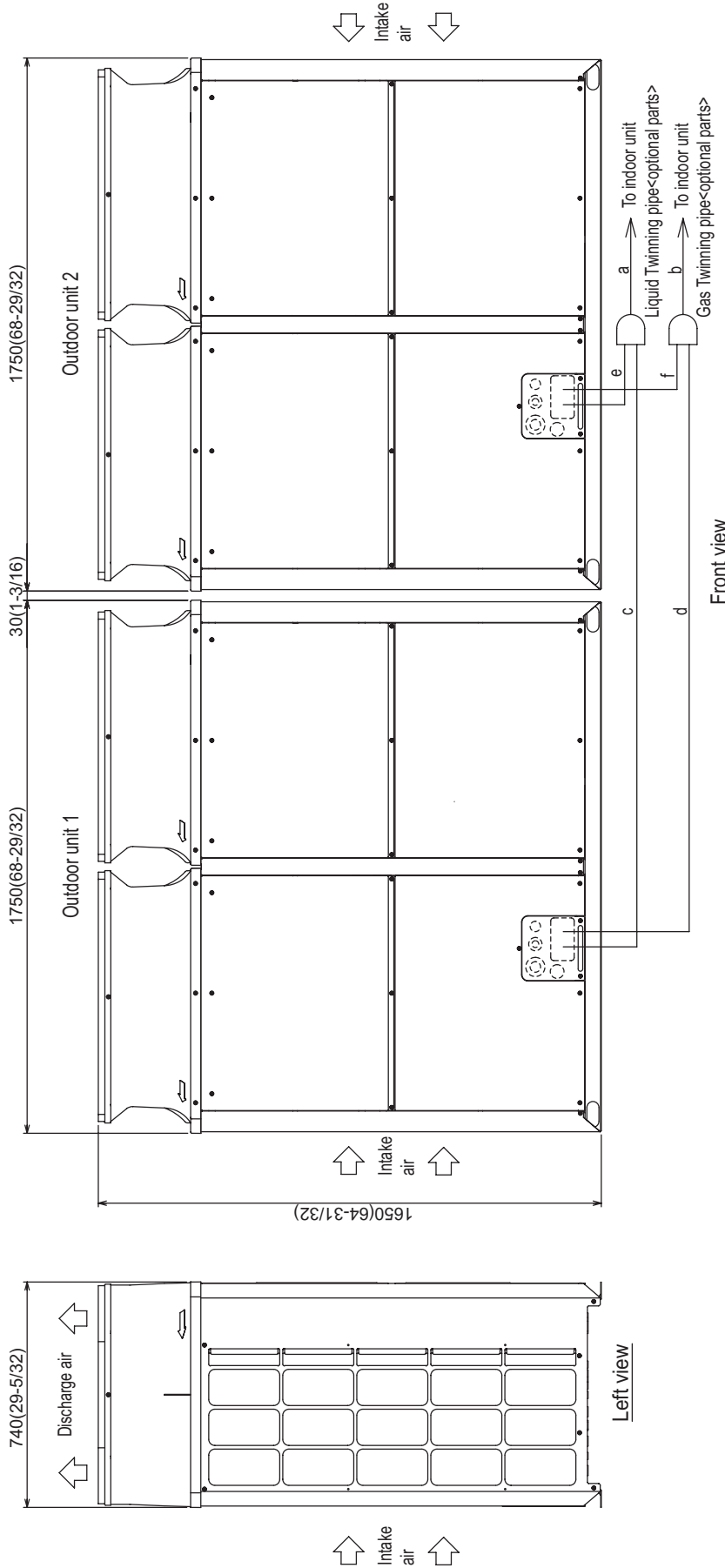
*2. For details on extended cooling operation range down to -10° F DB, see Low Ambient Kit Submittal.

** Each individual module requires a separate electrical connection. Refer to electrical data for each individual module.

Outdoor Unit: PUHY-P240YSKMU-A (-BS) – DIMENSIONS

PUHY-P240YSKMU-A(-BS)

Unit : mm(in.)



Front view

Left view

Twinning pipe connection size

Package unit name	PUHY-P240YSKMU-A(-BS)	
Component unit name	Outdoor unit 1	PUHY-P120YSKMU-A(-BS)
Outdoor Twinning Kit(optional parts)	Outdoor unit 2	PUHY-P120YSKMU-A(-BS)
Indoor unit- Twinning pipe	Liquid	CMY-Y100CBK3 ø15.88(5/8)
	Gas	ø28.58(1-1/8)

Twinning pipe-Outdoor unit	Unit model	Liquid core	Gas d or f
	P120	ø12.7(1/2)	ø28.58(1-1/8)

Note 1. Connect the pipes as shown in the figure above. Refer to the table above for the pipe size.

2. Twinning pipes should not be tilted more than 15 degrees from the horizontal plane.

Be sure to see the Installation Manual for details of Twinning pipe installation.

3. The pipe section before the Twinning pipe (sections "a" and "b" in the figure) must have at least 500mm(19-11/16) of straight section

(*including the straight pipe that is supplied with the Twinning pipe).

4. Only use the Twinning pipe by Mitsubishi (optional parts).

Modules 1 & 2: PUHY-P120YKMU-A (-BS) – DIMENSIONS

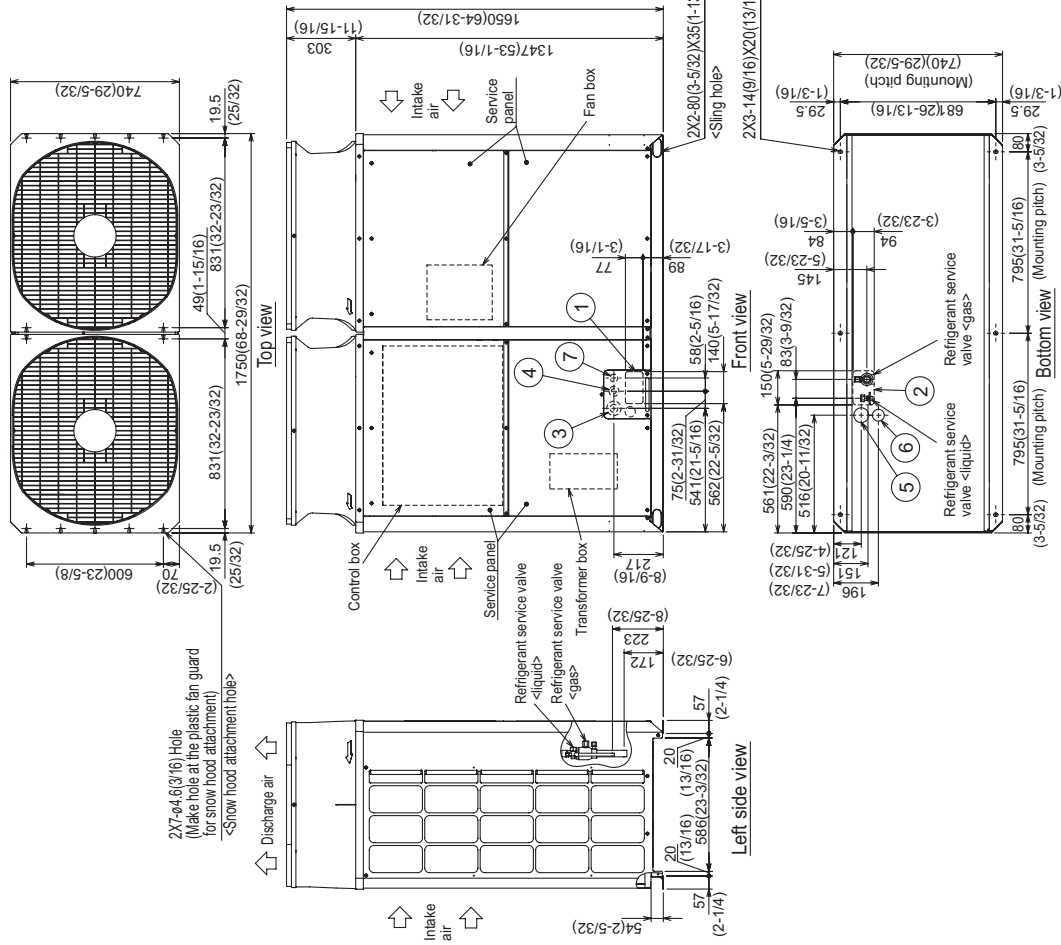
Unit : mm(in.)

Note 1. Please refer to the engineering manual for information regarding necessary spacing around the unit and foundation work. Outdoor unit must be mounted at least 12" off the ground or 12" above the highest average snow depth, whichever is greater.
 2. At brazing of pipes, wrap the refrigerant service valve with wet cloth and keep the temperature of refrigerant service valve under 120°C(248°F).

Connecting pipe specifications

Model	Refrigerant pipe		Diameter	
	Liquid	Gas	Liquid	Gas
PUHP120YKMU	ø52.7 Braze (3/8) *2 (ø12.7 Braze) (1/2) *1 *3 *4	ø28.58 Braze (1-1/8) *2	ø12.7 (1/2)	ø28.58 (1-1/8)
PUHP144YKMU	ø12.7 Braze (1/2) *1			

- *1 Expand the on-site piping and connect to the refrigerant service valve piping.
- *2 Use the pipe joint (field supply) and connect to the refrigerant service valve piping.
- *3 Indicates dimensions and connection specifications in the case the unit is used in combination with other outdoor units.
- *4. Furthest piping length (OU from IU) ≥ 40m (131ft)



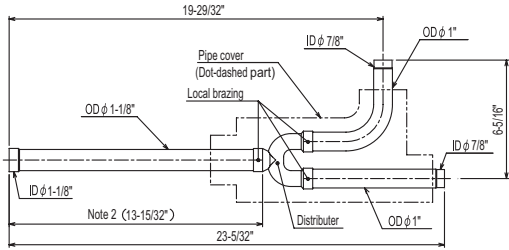
NO.	Usage	Specifications
①	Front through hole	140 x 77 Knockout hole (5-17/32) (3-1/16)
②	Bottom through hole	150 x 94 Knockout hole (5-29/32) (3-23/32)
③	Front through hole	ø27.7 or ø34.5 Knockout hole (2-15/32) (1-5/8)
④	Front through hole	ø43.7 or ø22.2 Knockout hole (1-3/4) (7/8)
⑤	Bottom through hole	ø65 Knockout hole (2-9/16)
⑥	Bottom through hole	ø62 Knockout hole (2-1/16)
⑦	Front through hole	ø34 Knockout hole (1-11/32)

Twinning Kit: CMY-Y100CBK3

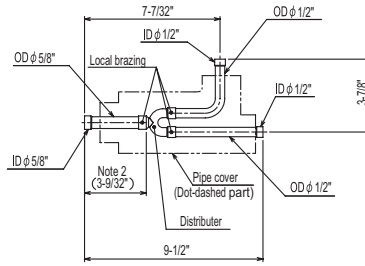
CMY-Y100CBK3

Ref.: CMY_Y100VBK2_EXD_EUDB_SI
in.

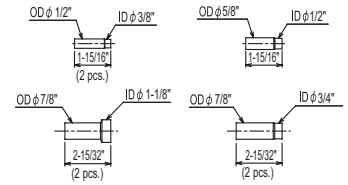
For Gas pipe:



For Liquid pipe:

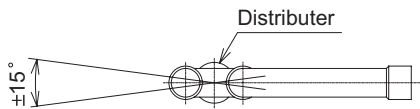


<Reducer(Accessory)>



ID: Inner Diameter OD: Outer Diameter

Note 1. Reference the attitude angle of the branch pipe below the fig.



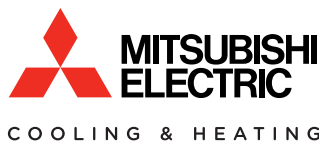
The angle of the branch pipe for high pressure is within $\pm 15^\circ$ against the horizontal plane.

2. Use the attached pipe to braze the port-opening of the distributor.
3. Pipe diameter is indicated by inside diameter.
4. Only use the Twinning pipe by Mitsubishi (optional parts).

Notes:



Intertek



1340 Satellite Boulevard
Suwanee, GA 30024
Toll Free: 800-433-4822
www.mehvac.com